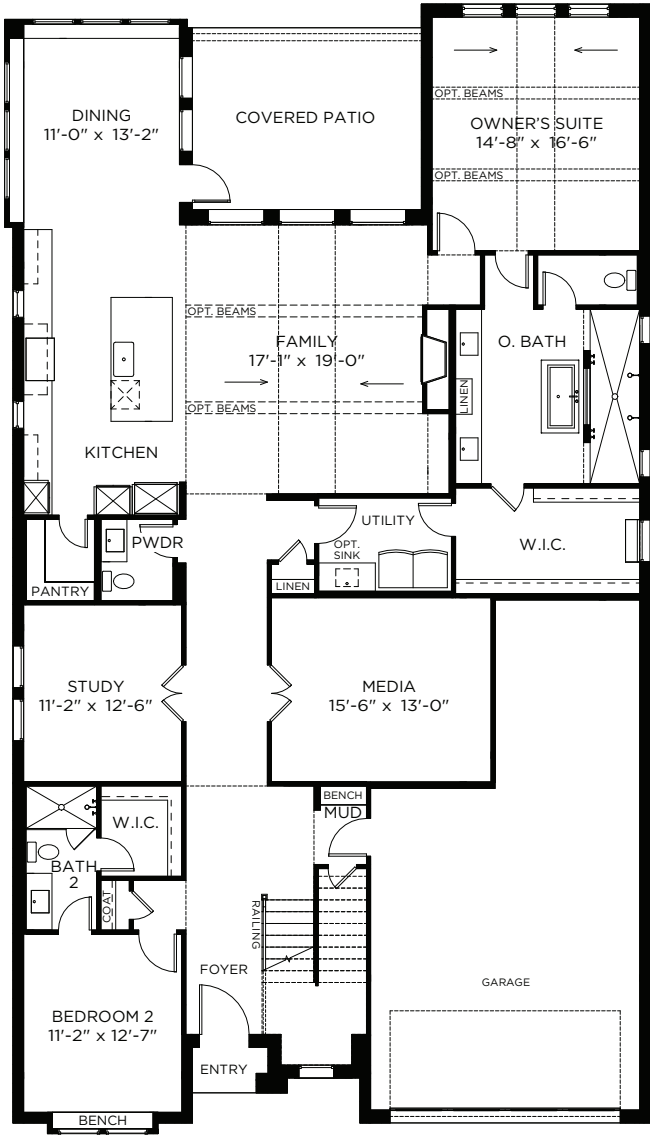
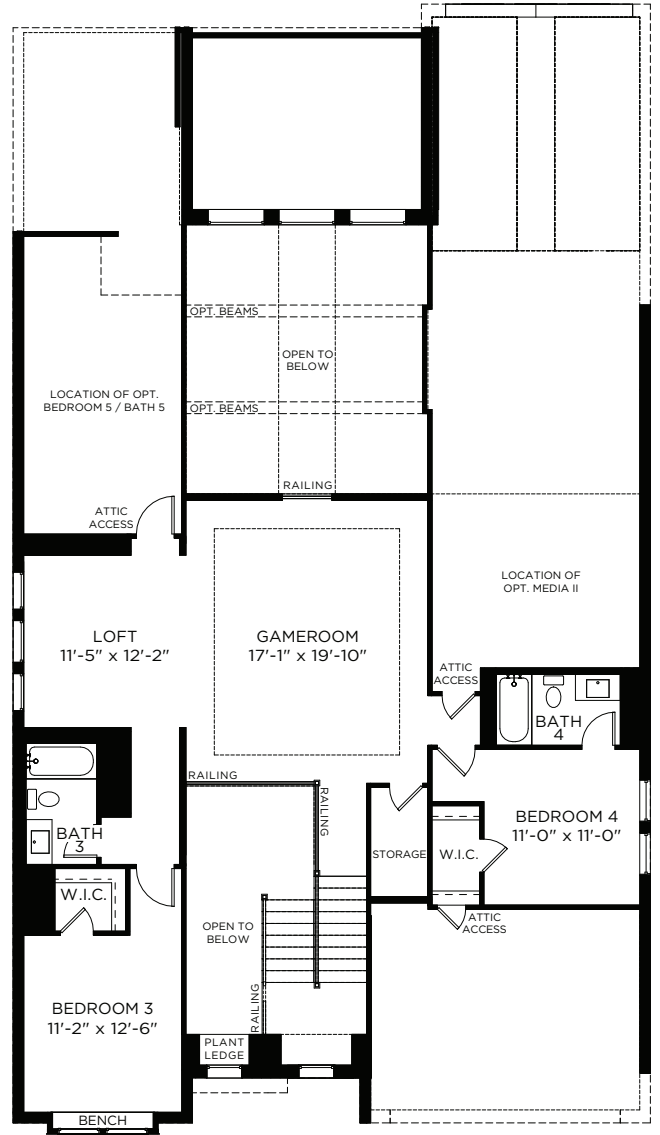


Addison III

4 4.5 3 2 3,781 SQ FT



1ST FLOOR PLAN



2ND FLOOR PLAN

All dimensions and square footage are approximate at Painted Tree and subject to change. Illustrations are artist's concept and not reproductions of original plans. The Southgate Homes policy of continual attention to design and construction requires that specifications, equipment and dimensions be subject to change without notice. Certain options can change room count. Please consult Community Sales Manager for details. 2024

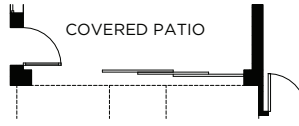


Addison III

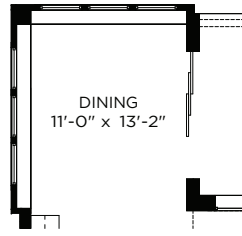


**SOUTHGATE
HOMES**

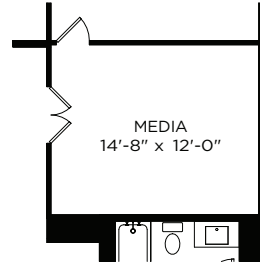
A GREEN BRICK PARTNER



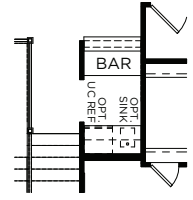
OPT. 15' SLIDER AT FAMILY



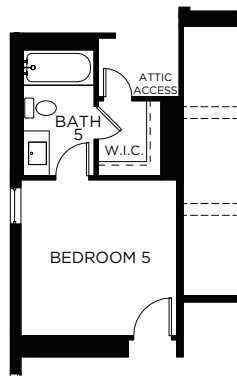
OPT. 9' SLIDER AT DINING



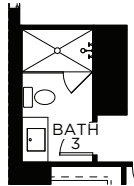
OPT. MEDIA II



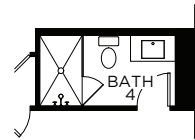
OPT. BAR



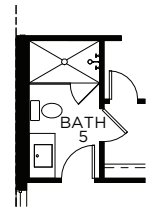
OPT. BEDROOM 5 / BATH 5



OPT. SHOWER AT BATH 3



OPT. SHOWER AT BATH 4



OPT. SHOWER AT BATH 5

All dimensions and square footage are approximate at Painted Tree and subject to change. Illustrations are artist's concept and not reproductions of original plans. The Southgate Homes policy of continual attention to design and construction requires that specifications, equipment and dimensions be subject to change without notice. Certain options can change room count. Please consult Community Sales Manager for details. 2024

© 2024 Southgate Homes. All rights reserved. Southgate Homes is a subsidiary of Green Brick Partners (NYSE: GRBK).

